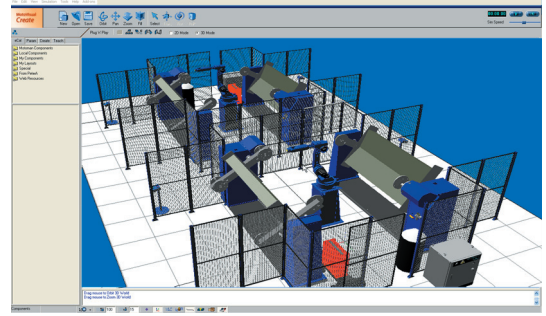


MotoVisual Create

- ◆ Import 3D model data
- ◆ Ready-made library with MOTOMAN robots and equipment included
- ◆ Manage geometry and remove excess detail
- ◆ Assign realistic colours and materials
- ◆ Define configuration rules
- ◆ Apply inverse kinematics for MOTOMAN robots
- ◆ Connect to external controllers
- ◆ Customize with Python scripting
- ◆ Expand and embed with COM

A 3D digital factory toolkit with a graphical authoring environment for building and publishing 3D component based simulation applications and equipment models that represent real world factory counterparts in look and behaviour.



MotoVisual Create delivers material flow and robotic simulation on the one platform for complete simulation and visualization of modern manufacturing systems. Now everyone can access 3D simulation models using layered products and reusable equipment libraries. New working layouts are created by simply snapping equipment models together, setting the machine geometry and performance parameters and the pressing the simulation run button.

REUSABLE EQUIPMENT LIBRARIES

MotoVisual Create combines different resource behaviours with existing CAD data to model any type of manufacturing resource from robots and conveyors to complex automatic warehouse storage systems and ergonomic human models. Companies can represent a product family with just one visual component model and generate interactive three dimensional production layouts on demand.

CUSTOMISABLE 3D TOOLKIT FOR PARTNERS AND INTEGRATORS

Use MotoVisual Create's developers tools to extend applications with process specific Add-ons or embed the MV Create window in other applications. COM based interfaces give access to different development environments as well as integration to SCADA, MES and ERP systems. A real-time interface connects the 3D-models to third party software and machine and line controllers for production validation and optimization.

