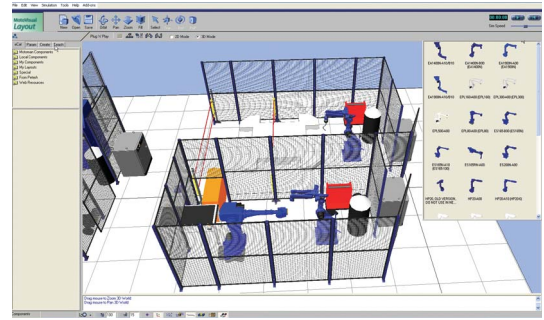


MotoVisual Layout

- ◆ Drag and drop equipment into a layout
- ◆ Ready-made library with MOTOMAN robots and equipment included
- ◆ Refine equipment parameters
- ◆ Teach new motion sequences
- ◆ Output complete BOM with part numbers
- ◆ Simulate and view production operations
- ◆ Print brochure quality pictures for quotes
- ◆ Email lightweight layout files for review

Quickly generate complete robot cells or production systems from an existing MOTOMAN equipment library.



Compare different layouts, equipment selections and throughput possibilities in real time with staff, suppliers and customers. The user-friendly visuals are easily distributed via e-mail allowing you to collaborate online, demonstrate proposals and communicate complex design, production and process issues.

FACTORY ENGINEERS - optimize production and reduce cost

Modify and fine-tune your existing production lines in a virtual world. Drag and drop equipment into place then check for maximum throughput and floor utilization. Avoid unnecessary capital purchases and costly production trials.

PROJECT ENGINEERS - shorten the design and approval process

An interactive visual presentation removes ambiguity and enables everyone to speak the same language. By sharing working layouts via e-mail, project engineers and suppliers can participate in real-time online reviews while interactively viewing a working production system. This eliminates physical location as a factor in planning in decision-making.

PLANT MANAGERS - commit yourself with confidence

You can "walk through" a production line with the customer and the design team to identify trouble spots early. Use MotoVisual Layout to present a new proposal to senior management and fast track the project with confidence.

SALES PEOPLE - present solutions that match the customer's needs

MotoVisual Layout is a powerful visual tool to focus on solutions. It allows the customer to input their knowledge and communicate their needs. Interactively build a concept with the customer and leave them with the means to review and promote the concept to all levels within their organization.



Simply drag and drop parts into place to assemble a module.



Build up a system layout by snapping equipment into place.



Adjust parameters, check the performance and compare alternatives.